

WARATAH[®]

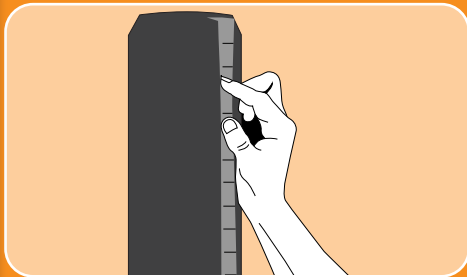
FIRST - BECAUSE IT LASTS.

FLEX RAIL[™]

INSTALLATION GUIDE

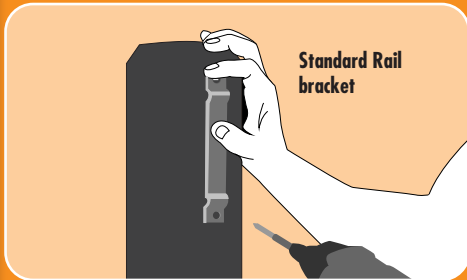


INSTALLING THE BRACKETS - INTERMEDIATE POSTS



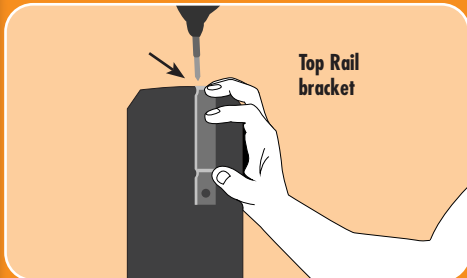
1.

Mark on your posts where you want the top of each rail to be. Grab a tape measure and a pencil and simply make a mark to represent where the top of each rail will be. Repeat this for all the intermediate posts.



2.

Once all the posts are marked up, grab your drill with your type 17 screw. Line up the mark with your bracket and screw in the bottom hole only. So you are able to slide the Flex Rail into the bracket. Careful not to over tighten the brackets.



3. TOP RAIL BRACKET

Line up your Top Rail bracket so that it is flush against the top of the post. Grab your drill with your type 17 screw and screw in the top hole only. This is because you want to be able to slide the Flex Rail into the bracket. Careful not to over tighten the brackets.



FIRST - BECAUSE IT LASTS.

TOOLS REQUIRED:



Marking pen | Tape measure



Spade drill bit | Drill



Type 17 screws with a nylon washer, 50 mm long with a 5/8 hex head



TIPS:

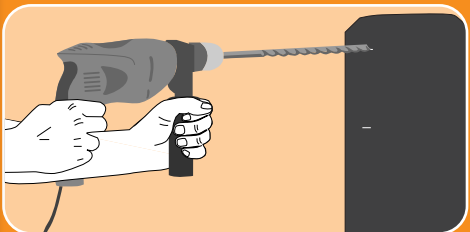
You may damage the brackets if the screws are overtighten.

PREPARING THE STRAINER POSTS



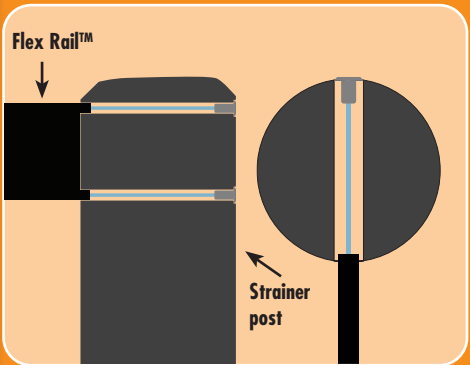
1.

Measuring from the inside of your strainer post, make 2 marks 115mm apart for the top and bottom wires in each panel of Flex Rail™.



2.

At your markings drill all the way through the post using the 12mm drill bit. ***TIP***



3.

On the other side of the strainer post to the Flex Rail, cut out a 35mm x 35mm section to ensure the Gripple® TL-300 will sit flat within the post to ensure there are no catch points.

WARATAH®

FIRST - BECAUSE IT LASTS.

TOOLS REQUIRED:



Marking pen | Tape measure



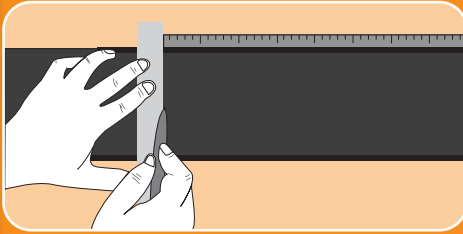
12mm drill bit | drill



TIPS:

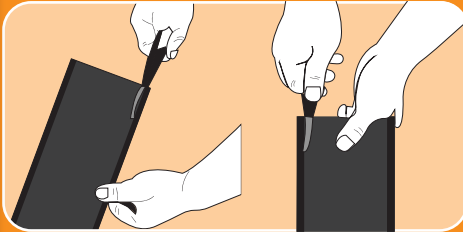
Ensure the holes are drilled as straight as possible, both holes must be parallel. Drilling the holes at an angle will create a kink in the wire and a potential weak spot. It will also make tensioning the rail harder.

PREPARING THE FLEX RAIL™



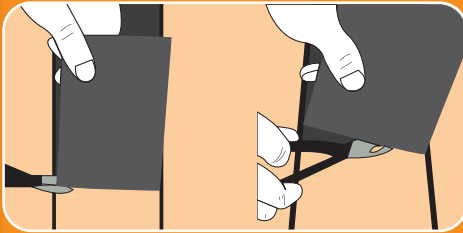
1.

Measure the Flex Rail to correspond with the thickness of the strainer post, with the addition of 150mm, to allow for the termination solution. E.g. If the strainer post is 300mm you should allow for 450mm. Mark this measurement.



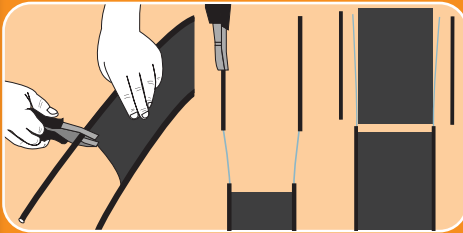
2.

Using the Waratah cutters, cut along the plastic, next to the Longlife Blue® wire on each side, to the mark.



3.

Twist a further 90° to the right to ensure that the long leg is now on the bottom and short leg on top.



4.

Using Waratah pliers gently score the remaining plastic around the 2 wires approximately 2cm from the cut plastic. Using the pliers grip the end of the plastic and pull it away from the wire. Your Flex Rail is now ready to attach to your strainer post.

WARATAH®

FIRST - BECAUSE IT LASTS.

TOOLS REQUIRED:



Waratah cutter



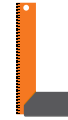
Waratah pliers



Utility knife



Marking pen



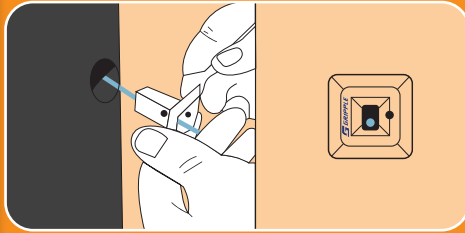
Square



TIPS:

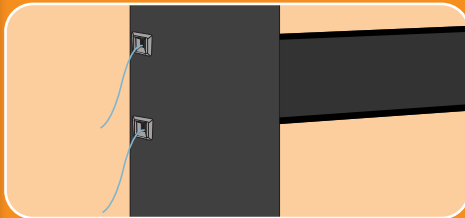
To make installing your flex rail easier we recommend rolling out your rolls the day before installing them. This will make it easier to handle when cutting and straining.

ATTACHING FLEX RAIL™ TO THE POSTS



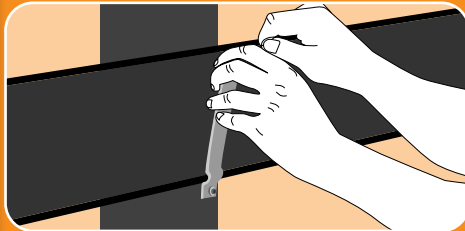
1. STRAINER POSTS

Insert the Longlife Blue® coated wire through the pre-drilled holes in the strainer post. Using the Gripple TL-300 wire tensioner simply slide onto the wire through the back side of the strainer posts. Small end first, inserting the wire and fitting it into the 35mm x 35mm cut out in the strainer post.



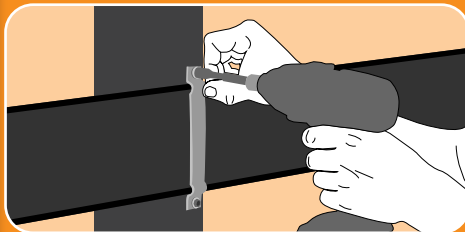
2.

Cut the remaining wire, and lightly tap the cut end with a hammer until the wire is tucked away. Do this for the remaining rail wires down the strainer post.



1. INTERMEDIATE POSTS

Pick up the Flex Rail (making sure you have no twists in the line) & slide the rail in the bracket from above. Fit the rail into the bracket position and secure the top of the bracket with your drill and hex screw where you drew the marking earlier. Repeat this step across all your intermediate posts.



WARATAH®

FIRST - BECAUSE IT LASTS.

TOOLS REQUIRED:



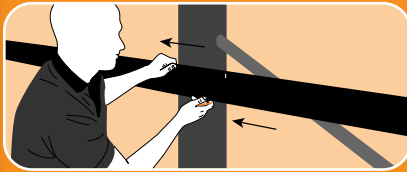
Waratah cutter | Hammer | Drill



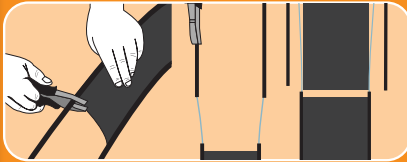
Type 17 screws with a nylon washer,
50 mm long with a 5/8 hex head



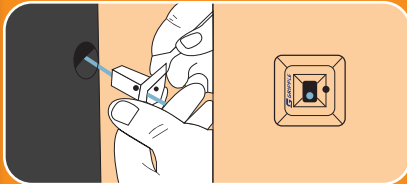
STRAINING THE FLEX RAIL™



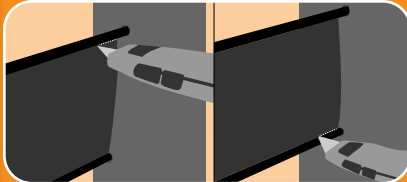
1. Pull the rail tight and mark the rail where it lines up with the inside of the straining post.



2. Prepare the rail for straining, using the same steps shown on page 5 **PREPARING THE FLEX RAIL®**



3. Attach the rail to the post by inserting the wires through the post these steps are shown on page 6 **ATTACHING FLEX RAIL TO STRAINER POSTS**



4. Make two small cuts approximately 20mm long under the top wire and above the bottom wire. This will allow the coated wire to pull into the post when strained.



5. Strain the wire by placing the Gripple tensioning tool flush against the TL-300 and line the wire up with the open jaw. Close the handles to pull the wire through. Repeat until the coated wire has been pulled into the post and the rail is tensioned.

WARATAH®

FIRST - BECAUSE IT LASTS.

TOOLS REQUIRED:



Waratah cutter



Waratah pliers



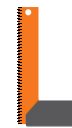
Utility knife



Marking pen



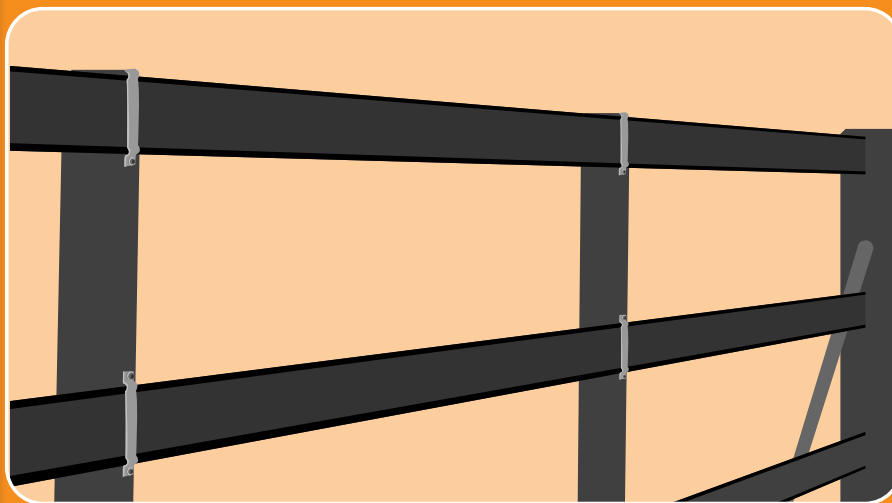
Tape measure



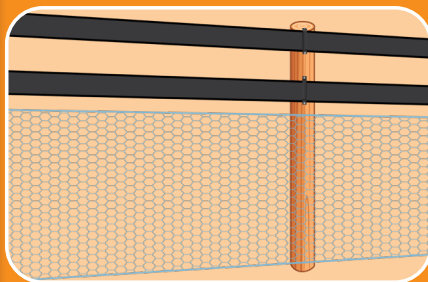
Square

Gripple tensioning tool

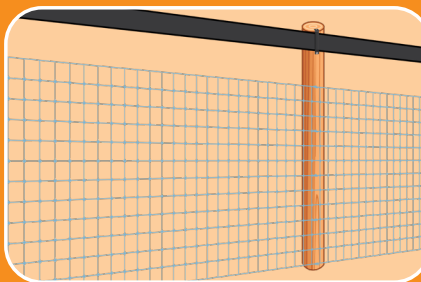
COMPLETED FLEX RAIL™ FENCE



ALTERNATIVE FLEX RAIL™ FENCE DESIGNS



**2 FLEX RAIL HORSE FENCE WITH
1.8mm NETTING LONGLIFE BLUE®**



**1 FLEX RAIL HORSE FENCE WITH
STOCKSAFE-T® LONGLIFE BLUE®**

WARATAH®

FIRST - BECAUSE IT LASTS.

BENEFITS OF WARATAH FLEX RAIL™ SYSTEM



LOOKS

Like a timber rail fence, but with greater flexibility, no splintering or need to paint.



SAFE

A highly visible rail that absorbs impact, reducing the risk of serious injuries.



ADDED STRENGTH

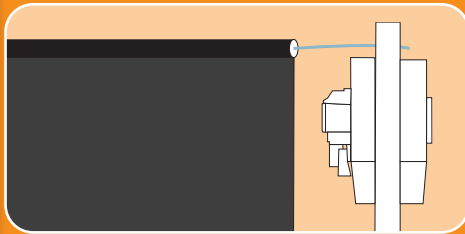
Flex Rail provides strong perimeter protection with the 2.50mm high tensile Longlife Blue® wire reinforcing the strength of each rail.



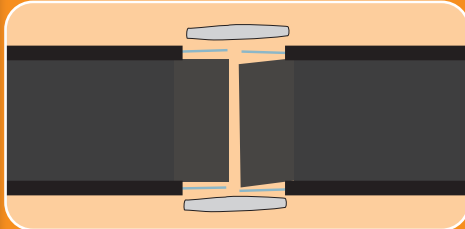
LOW MAINTENANCE

Will not splinter or rot. Minimal upkeep is required for a visually appealing fence with no need to paint rail.

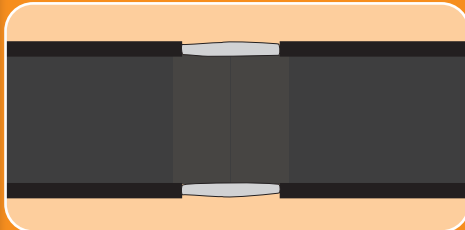
JOINING ROLLS OF FLEX RAIL™ USING FLEX RAIL™ JOINERS



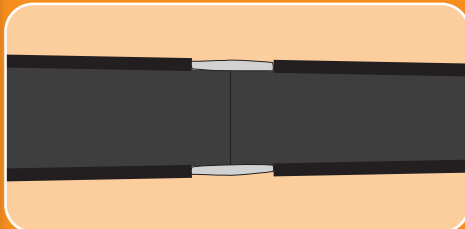
1. Measure and mark 40mm from the end of the Flex Rail.



2. Cut along the inside of the wire to the mark.



3. Repeat steps 1 & 2 for the other side of the rail that you will be joining.



4. Bend the rail panel out of the way.

5. Cut 5mm of the wire off. This will leave 35mm of exposed wire which will fit in the Flex Rail joiner. It will also leave 40mm of the panel which will provide 5mm overlap in each direction of the join.

6. Insert the ends of the wire into the Flex Rail Joiner until there is no exposed wire on either side.



FIRST - BECAUSE IT LASTS.

TOOLS REQUIRED:



Waratah cutter



Waratah pliers



Utility knife



Marking pen



Tape measure



Square



FIRST - BECAUSE IT LASTS.

WARATAH HORSE FENCING PRODUCT RANGE

Waratah provide specifically designed horse fencing products that are safer, easier, and more cost effective over the life of your fence.

Waratah's Flex Rail™ system closely resembling traditional timber rail fencing. Offering a simple solution for containing horses, safely, and without sacrificing appearance. Backed by Waratah Guarantee, you can be sure it's made for Australian conditions.



SCAN TO CHECK OUT THE FULL RANGE OF WARATAH'S HORSE FENCING PRODUCTS



WARATAH CUSTOMER SERVICE
13 10 80 www.waratahfencing.com.au

TM, © Trademark or Registered trademark of InfraBuild Wire Pty Limited, Ingall Street, Mayfield NSW 2304. ABN 59 000 010 873.

